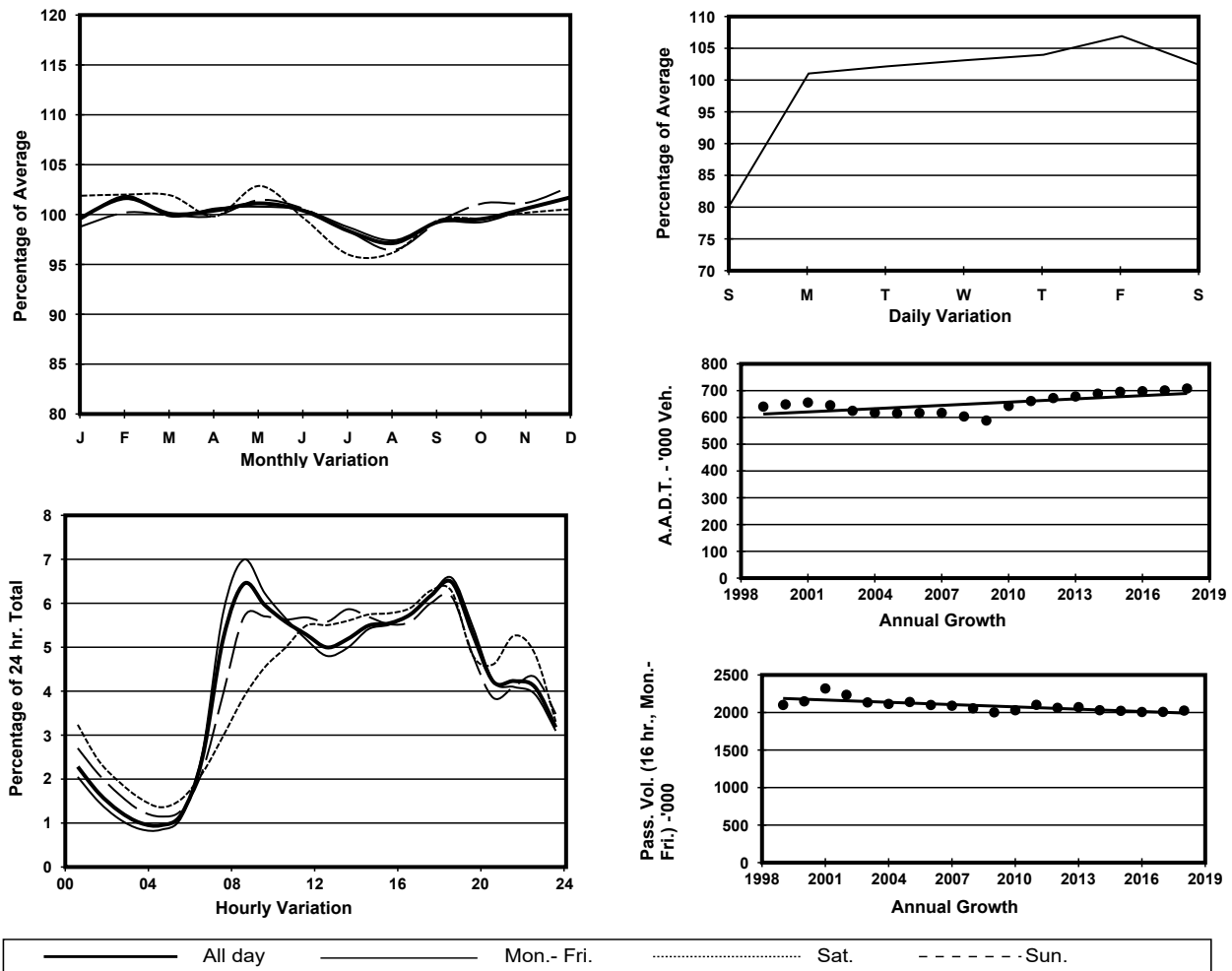


YEAR 2018

Location Kowloon External Cordon(Kolwoon Urban Area Boundary)

Stations on Cordon/Screenline 4201, 5017, 5021, 5022, 5023, 5024, 5026, 5030, 5037, 5038, 6203, 6204 and 6214

1. TRAFFIC FLOW VARIATION AND GROWTH



2. TRAFFIC CHARACTERISTICS (BY DIRECTION)

Parameter	All - Day	Mon. - Fri.	Sat.	Sun.
SOUTH BOUND				
A.A.D.T.	363820	381360	373350	293600
R 12 / 24 - %	71.4	72.4	70	66.4
R 16 / 24 - %	86.7	87.4	85.2	83.8
AM Peak Hour	0800-0900	0800-0900	0800-0900	0900-1000
One-way flow at AM peak hour	27020	30720	24670	15230
T - % (AM)	-	13.2	-	-
PM Peak Hour	1800-1900	1800-1900	1800-1900	1700-1800
One-way flow at PM peak hour	22700	23680	23090	19170
T - % (PM)	-	11.1	-	-
Prop.of commercial vehicles - 16 hr.	-	14	-	-
NORTH BOUND				
A.A.D.T.	344120	358560	359010	282660
R 12 / 24 - %	64.6	65.5	63.9	59.4
R 16 / 24 - %	85.2	86.2	83.1	81.1
AM Peak Hour	0800-0900	0800-0900	0900-1000	0900-1000
One-way flow at AM peak hour	18600	21020	18280	10950
T - % (AM)	-	14.7	-	-
PM Peak Hour	1800-1900	1800-1900	1700-1800	1700-1800
One-way flow at PM peak hour	23170	24990	21950	17080
T - % (PM)	-	10.7	-	-
Prop.of commercial vehicles - 16 hr.	-	15	-	-

3. OTHER INFORMATION AND COMMENT

Kowloon External Cordon
Year 2018

4. Vehicle classification and occupancy - Monday to Friday

Time		Class of vehicle									
		Motor Cycle	Private Car	Taxi	Private LB	PLB	Goods veh.		Non Fr. Bus	Fr. Bus	
							Light	M & H		SD	DD
0700-0800	Pro	4.4	46.1	15.8	1.9	1.7	15.7	7.6	3.6	0.1	3.2
	Ocp	1.1	1.3	2.1	7.6	12.2	1.4	1.1	16.3	7.0	53.6
0800-0900 Peak Hour	Pro	3.6	50.1	13.9	0.9	1.5	16.2	7.8	3.0	0.1	2.9
	Ocp	1.1	1.3	2.0	4.8	12.9	1.5	1.2	16.7	9.1	62.9
0900-1000	Pro	2.4	41.5	15.9	0.7	1.2	23.1	10.0	2.2	0.1	3.0
	Ocp	1.1	1.3	1.9	2.5	10.9	1.5	1.3	12.3	13.7	33.3
1000-1100	Pro	2.3	35.9	16.3	0.8	1.2	25.9	12.9	1.8	0.1	2.9
	Ocp	1.1	1.3	2.0	2.5	9.3	1.4	1.2	11.0	2.1	28.8
1100-1200	Pro	2.2	37.9	14.6	0.8	1.5	25.6	12.7	1.8	0.1	2.9
	Ocp	1.1	1.4	2.0	3.1	9.4	1.4	1.2	12.8	11.6	29.8
1200-1300	Pro	2.0	39.6	14.5	1.3	1.5	23.2	12.7	2.3	0.1	2.9
	Ocp	1.1	1.3	2.0	5.1	9.3	1.4	1.2	10.4	12.0	28.6
1300-1400	Pro	1.8	37.6	14.4	1.3	1.4	25.1	13.5	2.0	0.1	2.9
	Ocp	1.1	1.4	2.1	4.1	11.0	1.4	1.2	14.2	16.5	32.7
1400-1500	Pro	1.8	38.4	13.6	1.0	1.3	26.6	12.5	2.1	0.1	2.7
	Ocp	1.1	1.4	2.0	2.5	9.9	1.4	1.2	11.3	9.6	31.8
1500-1600	Pro	2.0	39.4	14.1	1.5	1.2	25.5	11.4	2.1	0.1	2.7
	Ocp	1.0	1.4	2.0	5.3	11.0	1.4	1.2	11.4	9.5	31.5
1600-1700	Pro	2.5	41.2	14.8	1.6	1.2	22.7	10.1	2.9	0.1	2.9
	Ocp	1.1	1.4	1.8	3.3	11.7	1.5	1.2	8.9	8.4	36.9
1700-1800	Pro	5.1	45.4	13.6	1.1	1.6	19.7	7.8	2.7	0.1	3.1
	Ocp	1.1	1.4	2.0	3.5	13.6	1.4	1.2	11.8	11.1	49.0
1800-1900	Pro	4.6	57.1	13.0	0.4	1.8	12.3	5.4	2.4	0.1	3.0
	Ocp	1.1	1.4	2.1	1.7	13.5	1.3	1.1	16.2	26.6	69.5
1900-2000	Pro	2.9	60.4	14.4	0.2	2.1	9.3	4.4	2.9	0.1	3.4
	Ocp	1.1	1.3	2.0	1.9	11.8	1.3	1.1	17.8	27.7	51.7
2000-2100	Pro	2.9	53.8	21.0	0.1	2.2	9.0	5.2	2.1	0.1	3.9
	Ocp	1.1	1.4	1.9	1.2	10.1	1.3	1.1	8.5	18.0	35.9
2100-2200	Pro	2.7	51.0	26.1	0.1	2.3	8.1	4.0	1.6	0.1	3.9
	Ocp	1.2	1.4	1.9	1.4	8.6	1.3	1.1	11.0	14.2	37.9
2200-2300	Pro	2.8	53.1	27.7	0.1	2.4	5.8	3.2	1.0	0.1	3.7
	Ocp	1.1	1.4	1.9	1.8	9.4	1.3	1.1	8.8	12.6	38.9
16 hours	Pro	2.9	45.5	16.0	0.9	1.6	18.7	8.9	2.3	0.1	3.1
	Ocp	1.1	1.3	2.0	4.2	11.1	1.4	1.2	13.1	12.9	42.0

Legend

Pro. Proportion of vehicles in % (Sum may not add up to 100% due to figure rounding)*

Ocp. Average occupancy of vehicles including both driver and passengers*

M&H Medium and Heavy

***** All traffic data are collected from combined bounds except for one way traffic